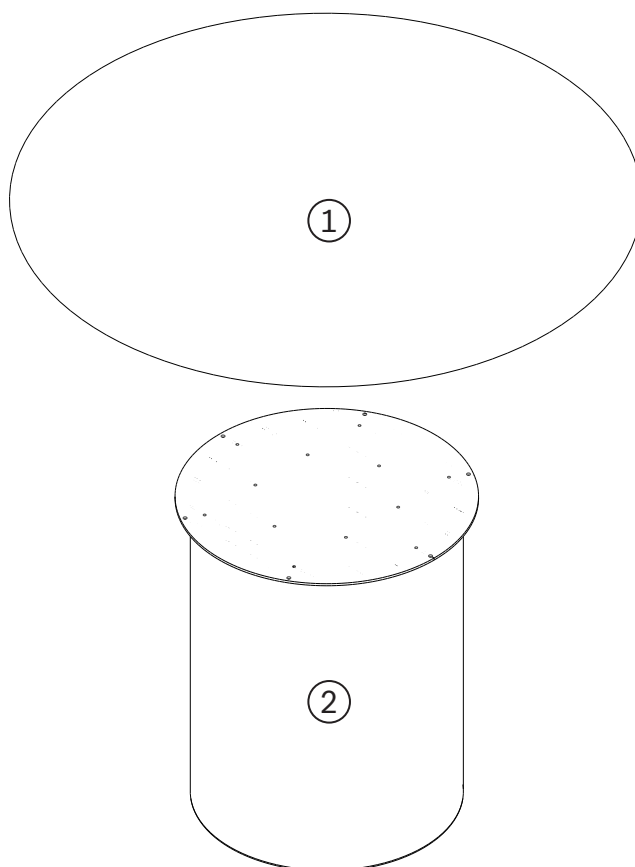
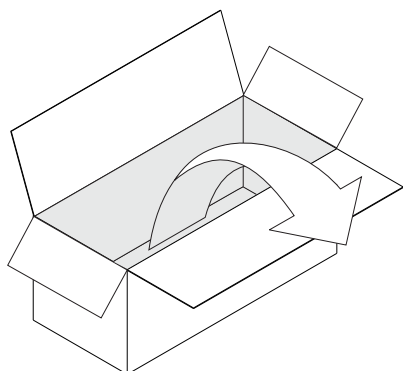
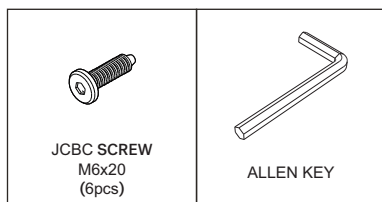


## ELEMENTS DINING TABLE

### ASSEMBLY INSTRUCTIONS FOR DINING TABLE INSTALLATION



#### HARDWARE & TOOL ENCLOSED



#### IN YOUR PACKAGE :

ASSEMBLY INSTRUCTIONS  
HARDWARE (AS LISTED ABOVE)

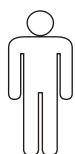
#### PARTS TO BE INSTALLED

1. TABLE TOP (1 pc)
2. LEG BASE (1 pc)

#### SYMBOLS



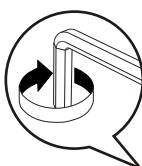
DIRECTION



NUMBER OF  
PERSONS NEEDED

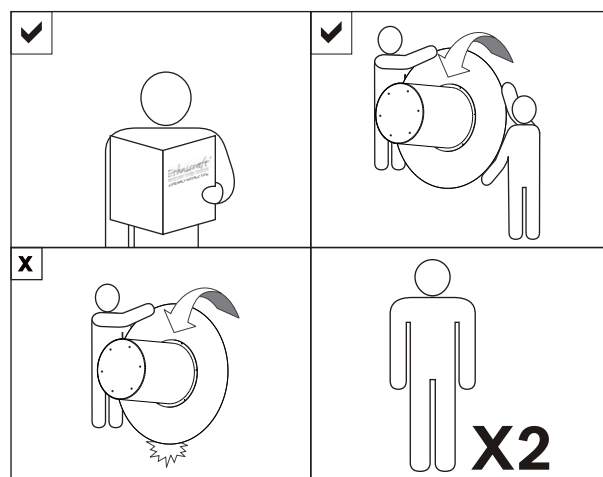


USE HAND



USE ALLEN KEY  
TO TIGHTEN

#### NOTICE

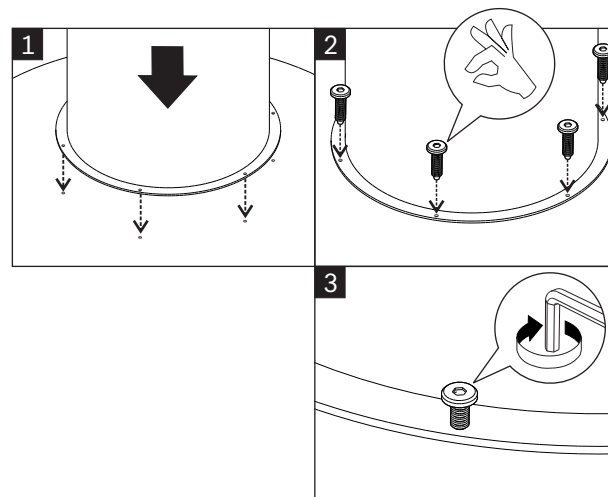
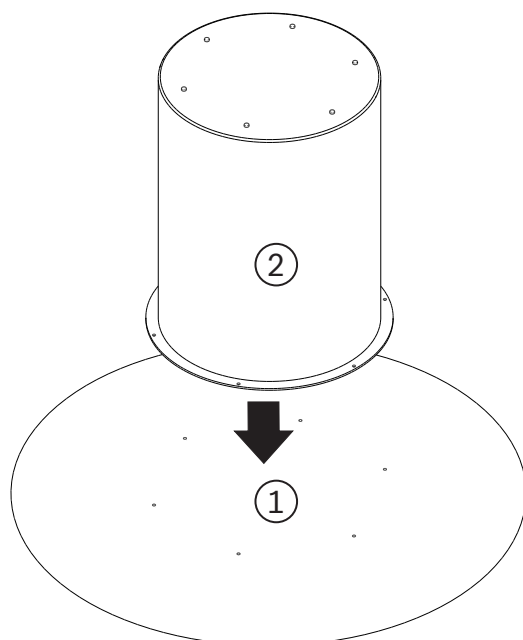


## ELEMENTS DINING TABLE

### ASSEMBLY INSTRUCTIONS FOR DINING TABLE INSTALLATION

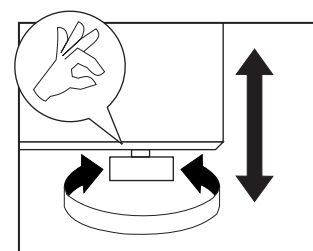
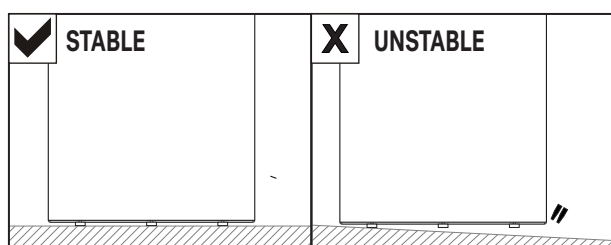
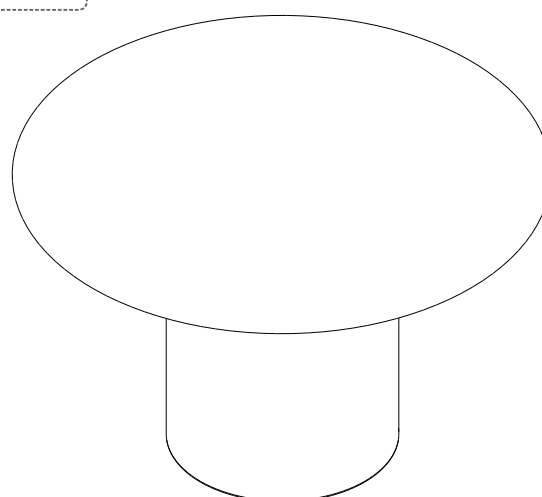
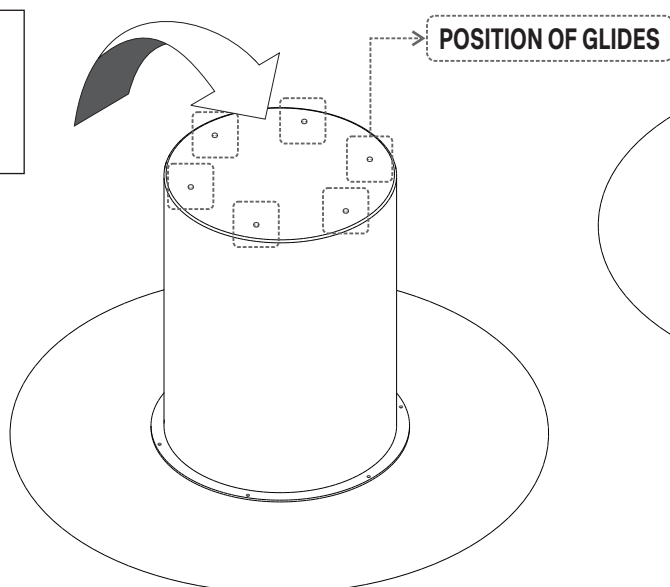
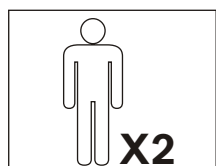


#### A ATTACHING LEG BASE TO TABLE TOP



- ! - USE JCBC SCREW M6x20 (6X)
- TIGHTEN FULLY

#### B MODIFY THE ADJUSTABLE GLIDES



**NOTE :**  
TO ENSURE STABILITY, ALL GLIDES SHOULD BE ADJUSTED  
TO MAKE EVEN CONTACT WITH THE FLOOR.